

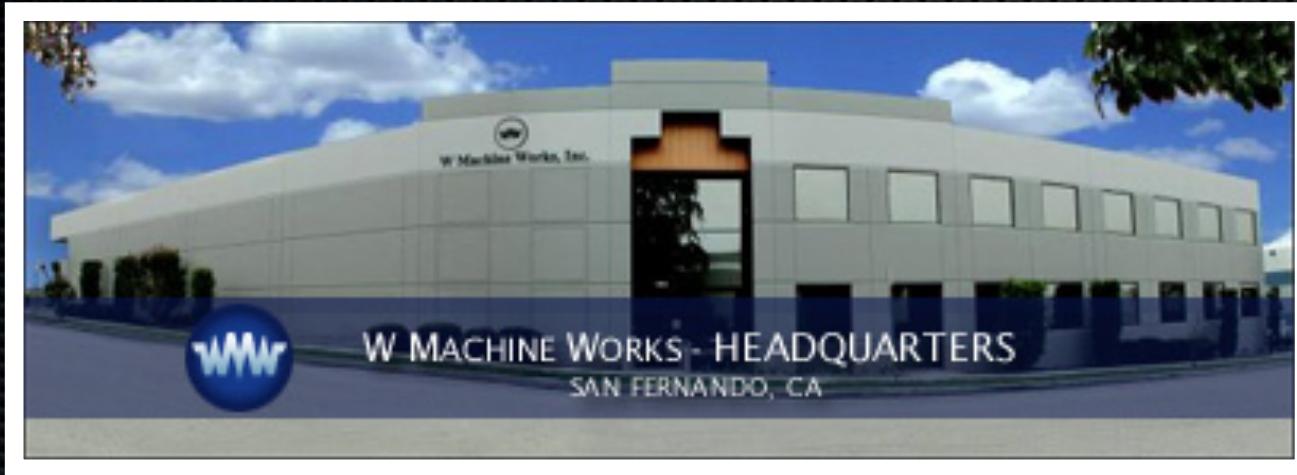


W Machine Works Inc.

Since 1978

Marzel Neckien

What do we do



**5-Axis, Palletized, Unattended Milling
Airframe Parts
Aerospace & Defense Industry
High Mix Low Volume Manufacturer**

Technology @ WMW

Roadmap Process 1.1.1 Strategic Planning

- **Computers**
- **Plasma Screen Work Stations**
- **CNC Equipment**

Computers

Roadmap Process 3.1.5 Production Planning

Hardware

- **Speed, Reliability**
- **Dual Monitors**
- **Used where data is collected and used**
- **Does it help increase throughput**

Software

- **Easy to use**
- **Able to network**
- **Does it help increase throughput**

Plasma Screen Work Stations

Roadmap Process 1.1.2 Leadership Communication

- Instant Messenger
- Blueprints
- ERP
- Labor Collector
- Net-Inspect
- Visual Aides
- Screensaver

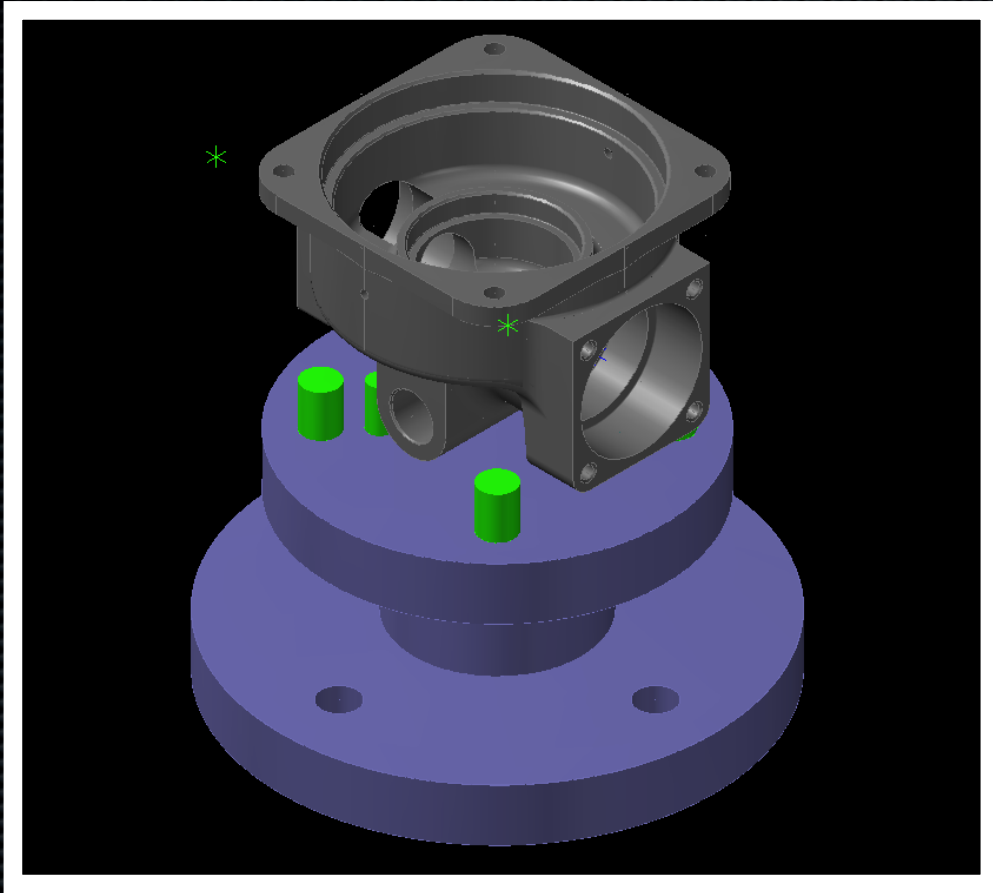


CNC Equipment

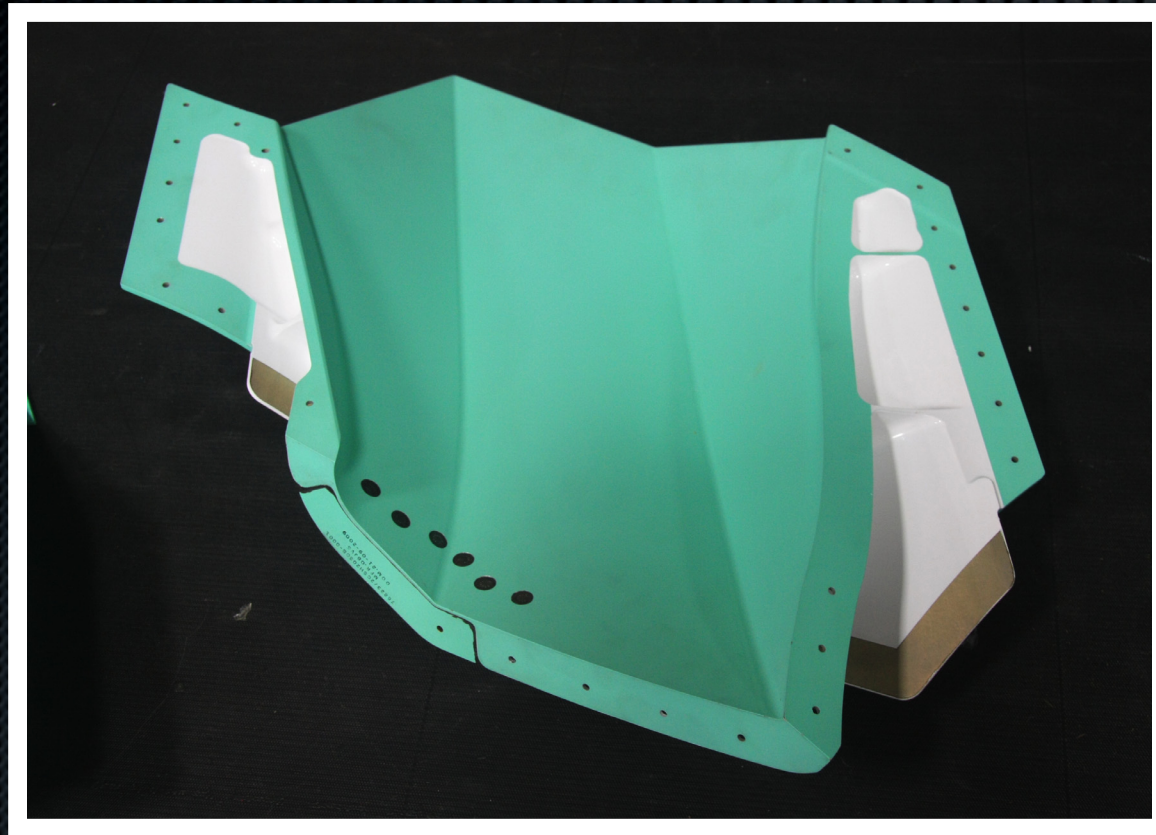
Roadmap Process 3.1.3 Quick Change Over

- **Multi Axis**
- **Palletized**
- **Reliable**
- **Accurate**
- **Support**





Features on multiple sides



Creative Features

Keys to Implementation

Leadership & Culture

- **Clearly Define The Expectation**
- **Make It A Process**

Workforce Development

- **Create Standard Work**
- **Train Workforce**
- **Create Incentives**

Operational Excellence

- **Create Metrics To Measure**
- **Follow Up**

Business Results



- **Almost a 300% Increase in Spindle Utilization**
- **50% Reduction in WIP**
- **43% Increase in Cash On Hand**
- **20% Reduction in Lead Time**

Thanks for Listening

Marzel Neckien, President

mneckien@wmwcnc.com

818-890-8049 ext. 237

www.wmwcnc.com